



30 VENDUE

RETAIL FOR LEASE

CHARLESTON, SC 29401

Kennedy Jordan | (843) 730-3573 | kjordan@kingandsociety.com



30 VENDUE OPPORTUNITY

An exceptional opportunity to lease a ground-floor commercial suite in the heart of Charleston’s coveted French Quarter. This 884 SF space offers a welcoming lobby, flexible open workspace, break room, and storage, making it ideal for office, retail, or boutique use. Located on historic Vendue Range, the property is just steps from Waterfront Park and the iconic Pineapple Fountain, two of Charleston’s most visited landmarks, ensuring unmatched visibility and foot traffic. The upper levels of the building currently operate as charming short-term rentals, complementing the lively mix of tourism, dining, and culture that defines the neighborhood.

RETAIL FOR LEASE

FOR LEASE

ADDRESS	30 Vendue Range, Charleston, SC 29401
SF AVAILABLE	884 SF (Ground Floor Suite)
LEASE RATE	\$100 PSF NNN
ZONING	Limited Business (LB)
YEAR BUILT	1743



884 SF
RETAIL FOR LEASE

East Bay Street



The Vendue Hotel

*#1 Hotel & Rooftop Bar in
Charleston Award Recipient*



884 SF For Lease

*Prime Retail Available for
Lease on Vendue Range*



Vendue Range

*One of Charleston's busiest
pedestrian streets*

Waterfront Park

*Charleston landmark overlooking
the Harbor & Cooper River*

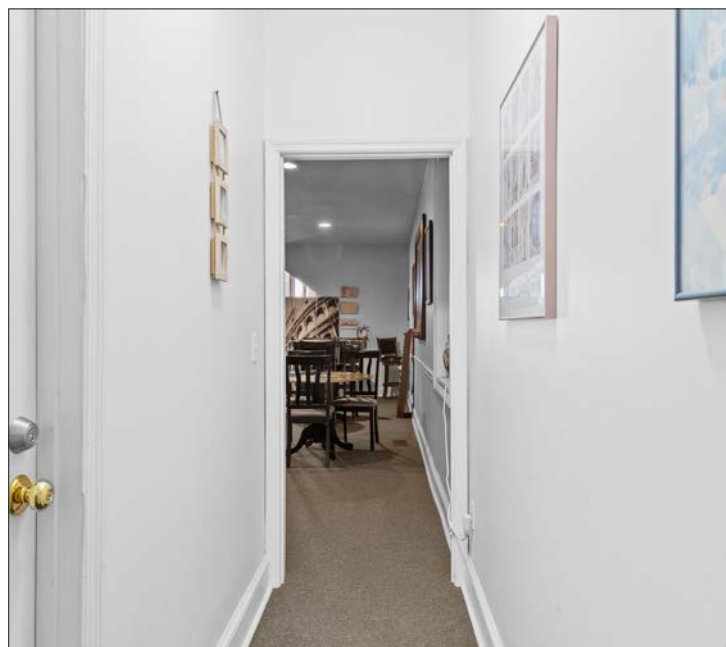
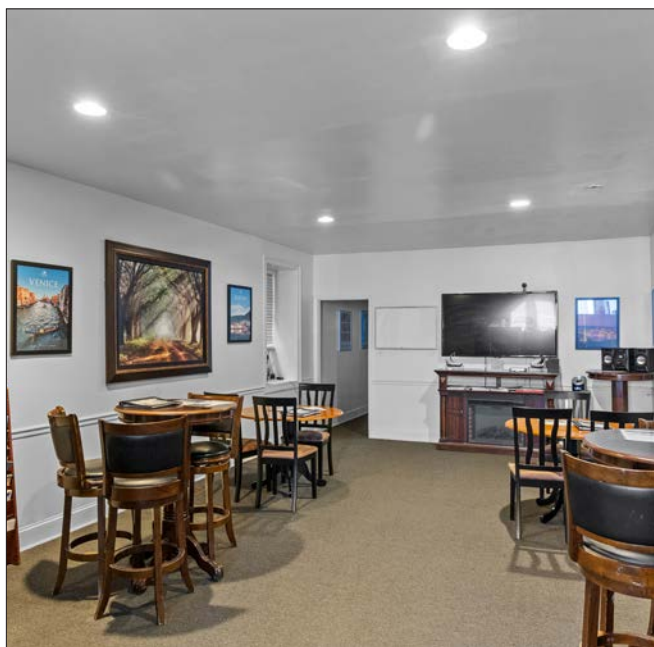


Pineapple Fountain

*One of Charleston's most famous
tourist attractions*



THE PLAN



FLEXIBLE LAYOUT

Includes a lobby, open workspace, break room, closet, and storage.



PRIME LOCATION

Steps from Waterfront Park, Pineapple Fountain, Rainbow Row, and East Bay Street.



HIGH FOOT TRAFFIC

Positioned on one of Charleston's busiest pedestrian corridors.



UNMATCHED VISIBILITY

Street-level frontage with steady exposure to tourists and locals.



DESTINATION

Walkable to award-winning restaurants, galleries, and boutiques.

AREA OVERVIEW

HOTELS

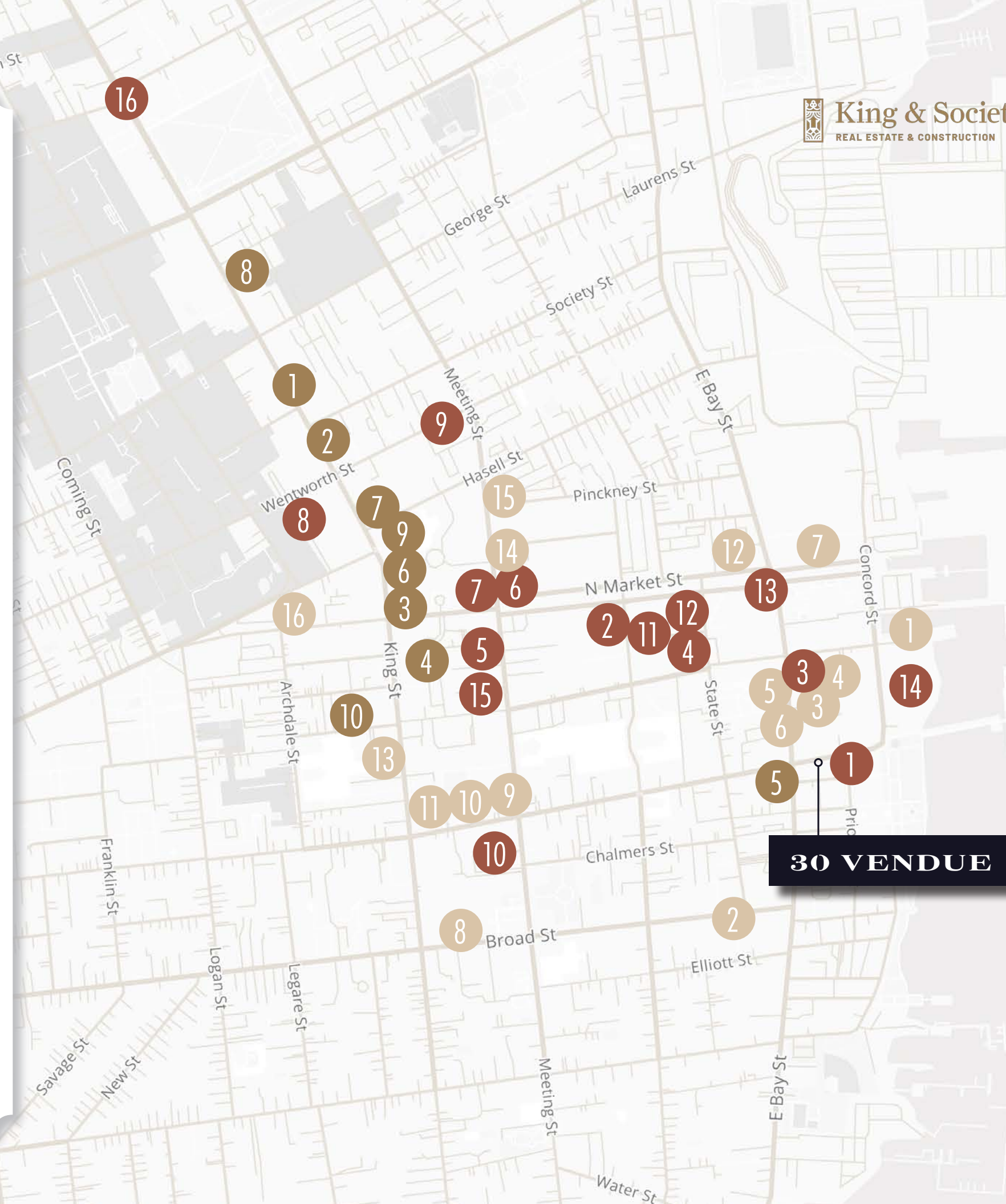
- | | |
|-------------------------|---------------------------|
| 1. The Vendue | 9. The Grand Bohemian |
| 2. Church Street Inn | 10. The Mills House Hotel |
| 3. The Palmetto Hotel | 11. French Quarter Inn |
| 4. The Loutrel | 12. The Spectator Hotel |
| 5. The Meeting St Inn | 13. Market Pavilion Hotel |
| 6. Planters Inn | 14. The Cooper |
| 7. The Charleston Place | 15. Four Seasons |
| 8. The Restoration | 16. Hotel Bennett |

RETAIL

- | | |
|-------------------------|---------------------|
| 1. Croghan's Jewel Box | 6. Gucci |
| 2. Kate Spade | 7. Golden Goose |
| 3. Louis Vuitton | 8. Williams Sonoma |
| 4. Love Shack Fancy | 9. Peserico |
| 5. Restoration Hardware | 10. Brooks Brothers |

RESTUARNATS

- | | |
|--------------------|----------------------|
| 1. Fleet Landing | 9. Husk |
| 2. Oak Steakhouse | 10. Poogan's Porch |
| 3. SNOB | 11. 82 Queen |
| 4. Carmella's Café | 12. Church and Union |
| 5. High Cotton | 13. 167 Raw |
| 6. Magnolias | 14. Peninsula Grill |
| 7. Burwell's | 15. FIG |
| 8. Sorelle | 16. Le Farfalle |





30 VENDUE



1



2



3



4

 **King & Society**
REAL ESTATE & CONSTRUCTION

**UPCOMING
DEVELOPMENT**
NEAR 30 VENDUE

RESTORATION HARDWARE

A popular home furnishing company is looking to revitalize the old Wagener-Ohlandt building on East Bay Street

THE COOPER HOTEL

Under Construction | Charleston's only waterfront hotel, a six-story, 225-key, 288000-square-foot hotel with a ballroom - Delivering 2025

UNION PIER

New mixed-use neighborhood open green space, affordable housing, and lower-density construction

FOUR SEASONS

5-Star Hotel, 139 luxury guest rooms, 36 private residences - Delivering 2028

SURROUNDED BY CHARLESTON'S ICONS



CHS CITY MARKET

0.3 MILES TO 30 VENDUE

For over 200 years, Charleston City Market has showcased the city's culture, history, and Southern charm. As one of the nation's oldest public markets, it remains a must-visit destination in the heart of downtown.



RAINBOW ROW

0.3 MILES TO 30 VENDUE

Dating back to the 1700s, pastel row of 13 townhouses, Rainbow Row is one of Charleston's most photographed landmarks and a lasting symbol of the city's charm.



KING STREET

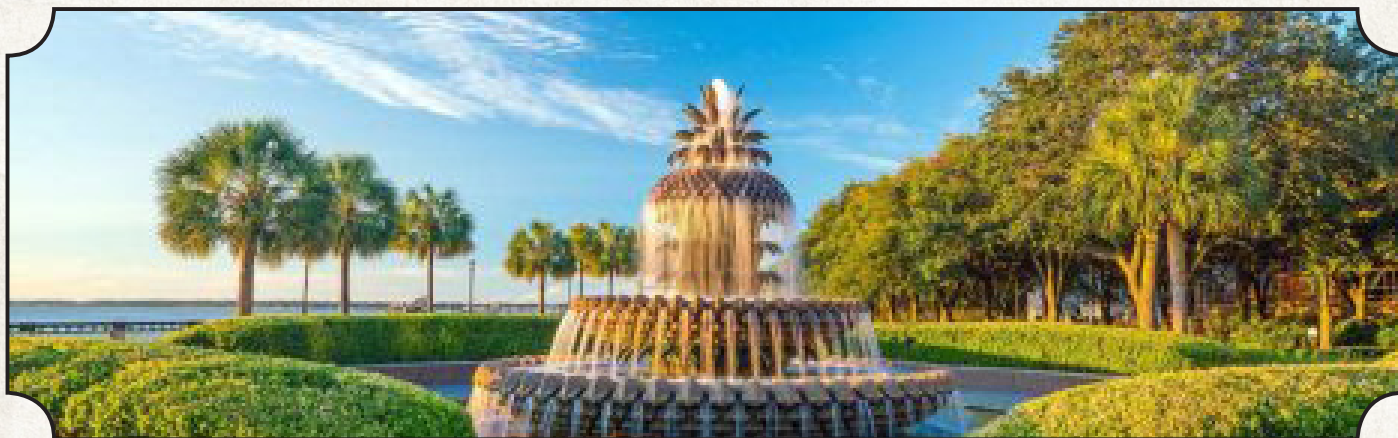
0.8 MILES TO 30 VENDUE

Charleston's premier shopping and dining corridor, King Street blends history with a vibrant mix of boutiques, antiques, art, and restaurants, making it the city's most dynamic retail hub.

WATERFRONT PARK

0.1 MILES TO 30 VENDUE

Steps from 30 Vendue | A favorite spot along Charleston's waterfront, the pier at Waterfront Park offers scenic Cooper River views, making it one of the most photographed places in Charleston. Its location on the same street ensures unmatched visibility for any business.



PINEAPPLE FOUNTAIN

0.1 MI TO 30 VENDUE

In Waterfront Park, the Pineapple Fountain is Charleston's most recognizable landmark and a symbol of Southern hospitality. This iconic photo spot draws hundreds of thousands of visitors each year, ensuring continuous foot traffic and visibility for nearby businesses.



THE BATTERY

1.1 MI TO 30 VENDUE

This historic seawall and promenade, lined with antebellum mansions, offers sweeping harbor views and remains one of Charleston's most visited attractions.

7.8M 14B

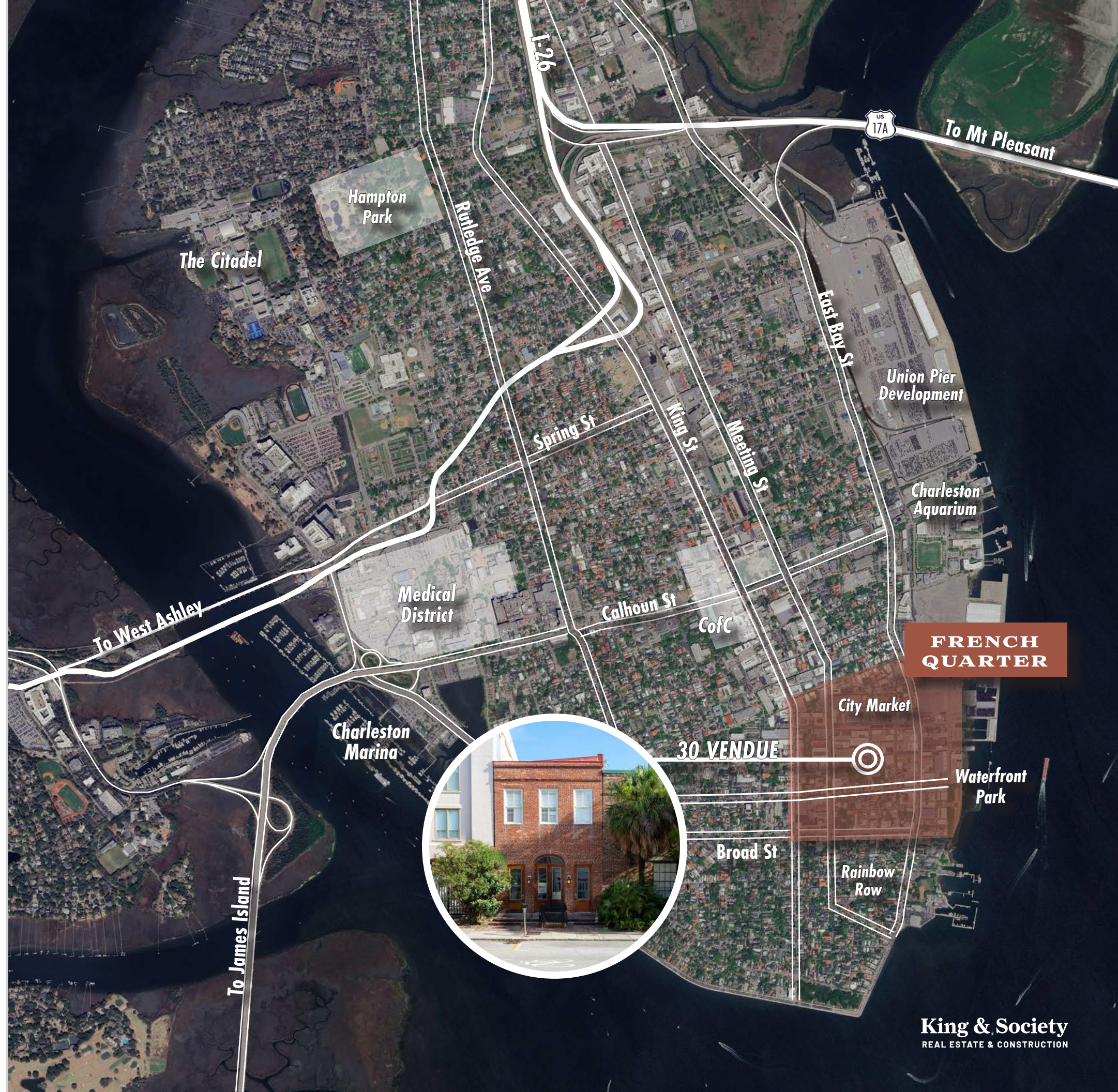
CHARLESTON, SC CONSUMER SPENDING IN 2025

	1 mile	3 mile	5 mile
2024 Total Population	11,184	54,470	121,554
2029 Proj. Total Population	12,236	59,038	131,023
2024 Total Households	5,245	24,384	54,020
Median Household Income	\$80,951	\$73,207	\$80,543
Median Home Value	\$1,008,991	\$631,562	\$488,492

East Bay Street to Concord Street	3,400 Vehicles Per Day
State Street to East Bay Street	1,150 Vehicles Per Day

Streets surrounding Vendue Range

Downtown Charleston is one of the Southeast's premier tourism destinations, welcoming more than 7.8 million visitors annually. Tourism generates an estimated \$13–14 billion in spending citywide each year, fueling the local economy and supporting thousands of businesses. Within just a one-mile radius of 30 Vendue, projected 2025 consumer spending exceeds \$880 million, underscoring the unmatched demand in this historic district.



King & Society
REAL ESTATE & CONSTRUCTION



884 SF
RETAIL FOR LEASE

Exclusively Listed By

Kennedy Jordan

(843) 730-3573

kjordan@kingandsociety.com

King & Society Real Estate & Construction

1012 eWall Street, Unit B

Mount Pleasant, SC 29464

kingandsocietyrealestate.com



King & Society

REAL ESTATE & CONSTRUCTION

King & Society makes no guarantees, representations, or warranties of any kind, express or implied, including but not limited to the accuracy, completeness, or reliability of the information contained herein. All interested parties are encouraged to conduct their own independent investigation to verify the accuracy of the details provided. King & Society disclaims any and all warranties arising from this document and assumes no liability for any loss or damages resulting from its use.